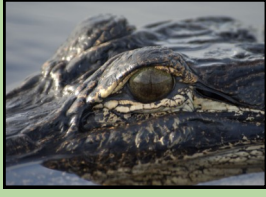


Photos: Alex Calzadillo



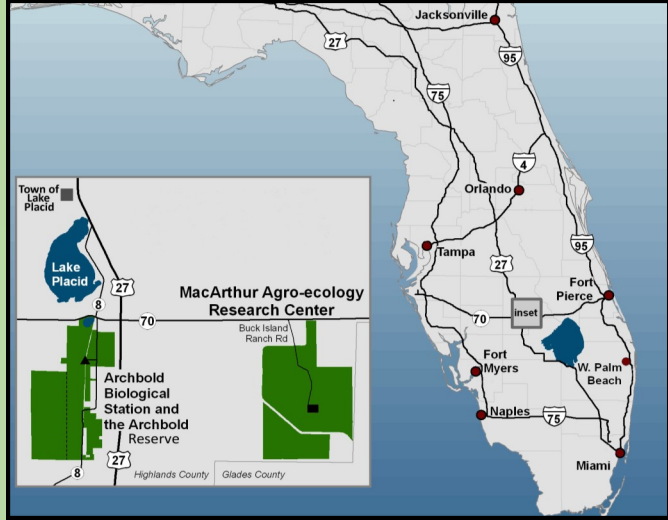
RED SHOULDERED HAWK



AMERICAN ALLIGATOR



SWALLOW-TAILED KITE



From West: From intersection of Highway 27 and SR 70 travel 7 miles east on SR 70. At the row of tall Australian Pines with a large unpaved parking area, turn right onto JC Durrance Rd. Follow the main dirt road through the orange grove for 5 miles. Turn right at the red 'Office' sign. Parking will be available immediately on the left.

From East: From intersection of SR 70 and CR 721 (blinking light) travel 7 miles west on SR 70. At the row of tall Australian Pines with a large unpaved parking area, turn left onto JC Durrance Rd. Follow the main dirt road through the orange grove for 5 miles. Turn right at the red 'Office' sign. Parking will be available immediately on the left.

Indian Prairie Safari

For reservations please call:
MacArthur Agro-ecology
Research Center
863-699-0242 ext 5
www.maerc.org

300 Buck Island Ranch Road
Lake Placid, Florida 33852

Buck Island Ranch Presents

Indian Prairie Safari



Photo: Alex Calzadillo

CRESTED CARACARA
(Threatened)

*Swamp Buggy
Eco-Tour
Exploring the
Real Florida:
In the heart of
the Everglades
Headwaters*

**Buck Island Ranch
and the
MacArthur Agro-Ecology Research Center**
A division of Archbold Expeditions



Lake Placid, Florida



Explore the Real Florida

Welcome to the **MacArthur Agro-ecology Research Center (MAERC)** at **Buck Island Ranch**, a unique 10,500-acre working cattle ranch and ecological research center. Located in the heart of the Indian Prairie, the ranch lies within the Everglades Headwaters, and southeast of Lake Placid, Florida. Buck Island Ranch is owned by the John D. and Catherine T. MacArthur Foundation and managed by **Archbold Biological Station** (Archbold Expeditions).

The Safari

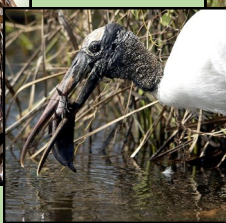
Climb aboard our swamp buggy, relax, and let our experienced guide take you through the rich, diverse landscape of this working cattle ranch with its unique ecology, and active research program.

- Learn about the value of cattle ranches in preserving Florida's natural environment, and their important role in Florida's history.
- Explore a mosaic of habitats including pastures, prairies, woodlands, and wetlands.
- Learn how these habitats are critical in supporting such distinctive species as Sandhill Cranes, Burrowing Owls, Crested Caracaras, Alligators, Otters, White-tailed Deer, wading birds, frogs, and many others.

AMERICAN ALLIGATOR



BARRED OWL



WOODSTORK



SANDHILL CRANE



WHITE-TAILED DEER

Photos: Alex Calzadillo



Photo: Carlton Ward

Safari Tour Information

- Tours are the 1st Friday of every month and begin at 9:00 a.m. (other dates and times may be arranged).
- Reservations are required.
- Length of tour is approximately 2.5 hours.

Pricing

- Minimum of 8 persons or \$120
- Adults—\$15; Children (6-12 years)—\$10; under 5 years are free with a paying adult.
- Special rates for groups and schools.

We Recommend You Bring

- Sunglasses • Sunscreen • Hat • Camera
 - Water Bottle • Binoculars
 - A sense of adventure!

Photo: Carlton Ward



Research Significance.

Florida is one of the nation's leading cattle producing states east of the Mississippi. About 1/6th of Florida's land area is rangeland and pastureland. More than one million beef cow-calf units are supported on grazing lands in the state. Cattle ranches also provide many ecological services including wildlife habitat and water recharge. Research activities at the MacArthur Agro-ecology Research Center examine the ecology and economic sustainability of working cattle ranches.